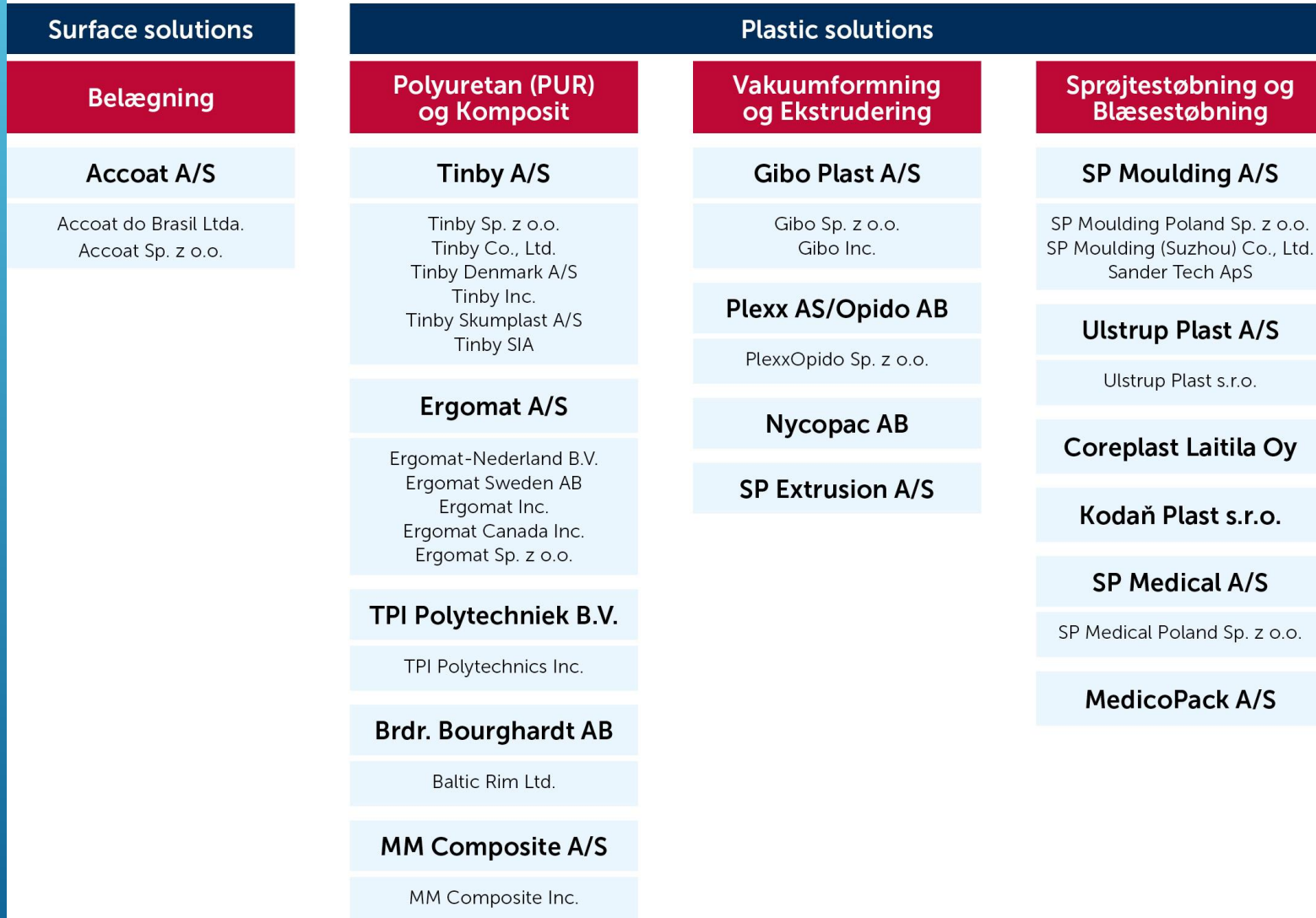



BIO-CASE FRA SP MOULDING A/S

Flemming Christiansen,
Markedsudviklingschef

SP Group A/S




HELT ELLER DELVIS BIOBASEREDE PLASTMATERIALER:

- ▶ PE, Polyethylen
 - ▶ Celluloseacetat
 - ▶ TPU, Termoplastisk polyurethan
 - ▶ PA, Polyamid
 - ▶ PET, Polyester
 - ▶ Stivelsesbaseret polymer, PLA
 - ▶ Stivelsesbaseret polymer ,PHA
 - ▶ Med flere
- 


EN BIOCASE: MUUTO FIBER ARMSTOL



KRAVSLISTE TIL MATERIALET:

- ▶ Biobaseret
 - ▶ Flere farver
 - ▶ Silkemat overflade efter støbning
 - ▶ Styrkemæssige krav
- 
- A decorative graphic consisting of several parallel white lines of varying lengths, slanted diagonally from the bottom right towards the top right, located in the lower right quadrant of the slide.

PRODUKTIONSMÆSSIGE UDFORDRINGER:

- ▶ Ensartet overflade
 - ▶ Forskelle i lots
 - ▶ Krævende fortørring inden støbning
 - ▶ Meget snævre procesparametre
 - ▶ Styrke i sammenløb ved skruetårne
- 
- A decorative graphic consisting of several parallel white lines of varying lengths, slanted diagonally from the bottom right towards the top right, set against the blue background.

NATUR FIBRE



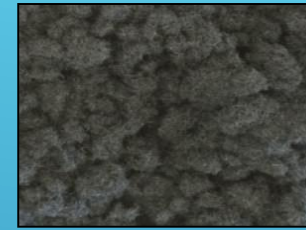
Bamboo fibers



Sieved flax



Wood shavings



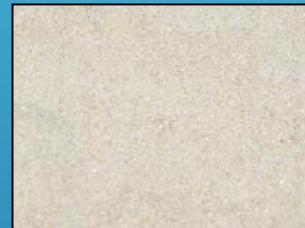
Milled cotton fiber



Coconut fibres



Almond shell



Rice husk



Grinded corn



**Grape seed
bran**



Grass fiber



Hay



Cork

HAMPFIBRE | POLYPROPYLEN



RISSKALLER I PVC



FRA BIOMATERIALE TIL GENBRUG



FRA BIOMATERIALE TIL GENBRUG



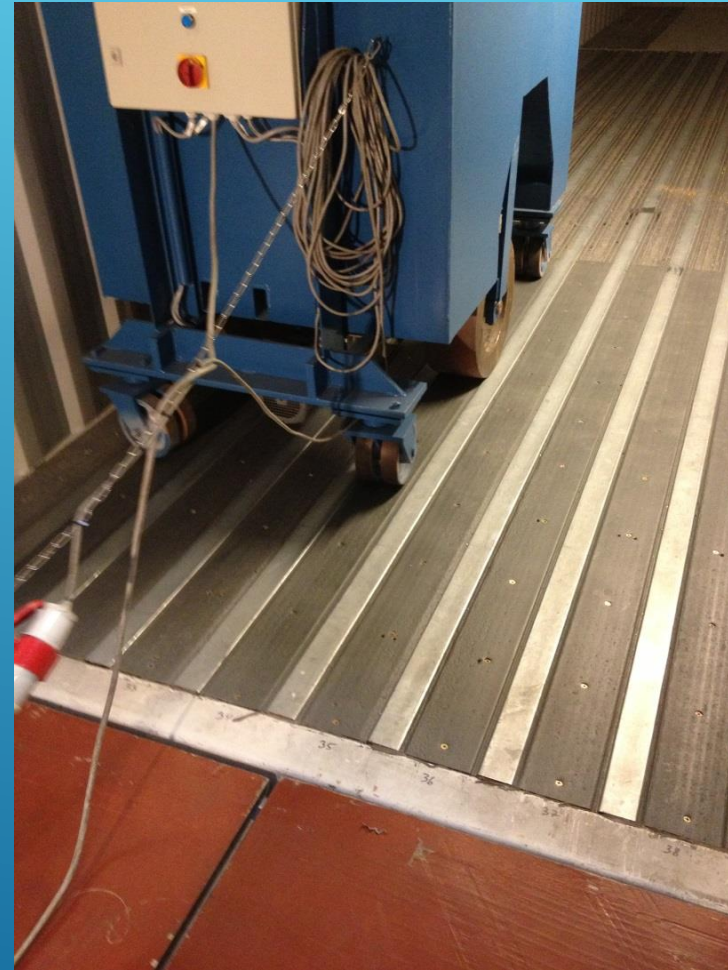
FRA BIOMATERIALE TIL GENBRUG



FRA BIOMATERIALE TIL GENBRUG



FRA BIOMATERIALE TIL GENBRUG



FRA BIOMATERIALE TIL GENBRUG



BIOMASSE TIL CO2 NEUTRALISERING



Food Waste

Garden Waste

**Dirty Paper
& Cardboard**

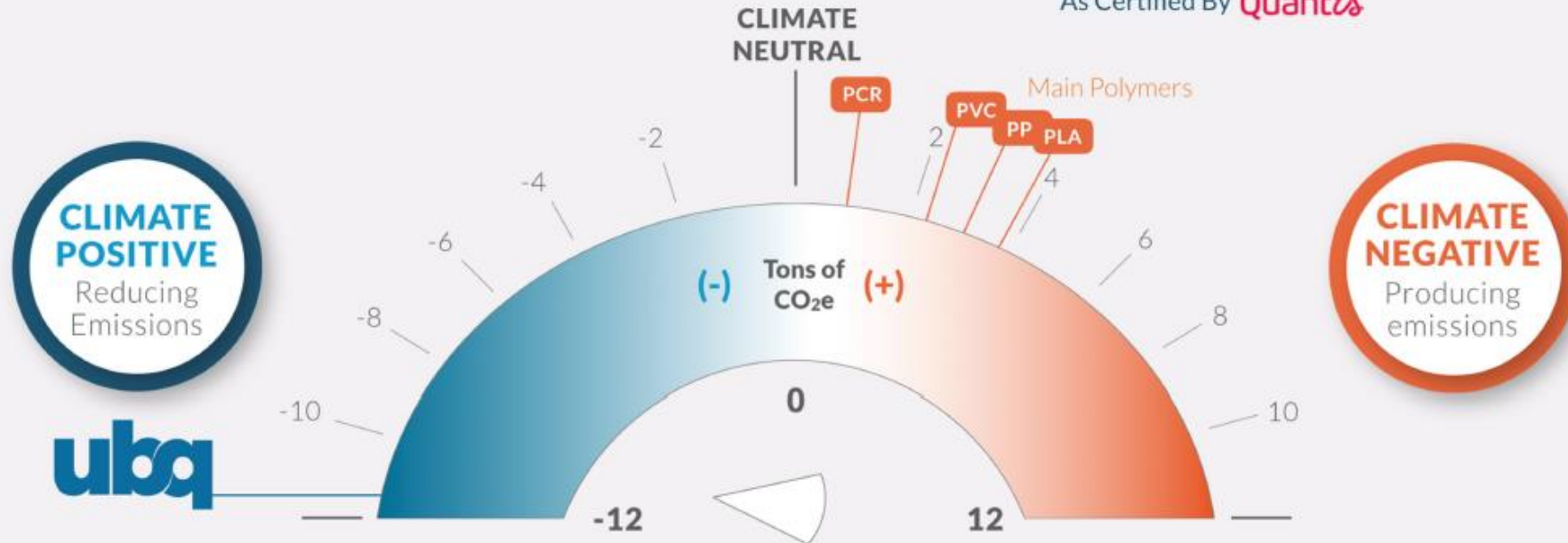
**Unrecycled
Plastic Waste**

19.03.28 - Bio Markets Insights Pres UBQ (Christopher Sveen)
.008.png

BIOMASSE TIL CO2 NEUTRALISERING

MOST CLIMATE POSITIVE Material Available in the Market Today

As Certified By **Quantis**



AVERAGE NET CARBON
FOOTPRINT OF 1 kg OF
UBQ™ MATERIAL
-11.7 kg/ CO₂e (GWP20)

ENVIRONMENTAL BENEFIT
14.5 kg/CO₂e
Total Offset Value

AVERAGE NET CARBON
FOOTPRINT OF 1 kg OF
POLYPROPYLENE (PP)
2.8 kg/CO₂e (GWP20)


BIOMASSE TIL CO2 NEUTRALISERING

Going Carbon Neutral

COMPATIBLE MARKET POLYMERS	CLIMATE IMPACT MARKET POLYMERS	CARBON NEUTRAL LOADING LEVEL WITH UBQ™
Recycled PCR PE (f)	0.45kg/CO ₂ e	4.29%
PVC (sp)	2.23kg/CO ₂ e	16.47%
PP (g)	2.77kg/CO ₂ e	19.62%
HDPE (g)	2.87kg/CO ₂ e	20.25%
PLA (g)	3.78kg/CO ₂ e	24.83%


UBQ's Climate Positive footprint enables those who adopt the UBQ™ Material to reach a new level of sustainability to their product portfolio. By substituting a relatively small percentage of their conventional raw materials, their product applications can be carbon neutral or even climate positive.

REPRÆSENTATIONER:

- ▶ Trifilon repræsenteres af Erteco
 - ▶ Resysta og UBQ repræsenteres af Plastcom
- 

SAMARBEJDE OM CIRKULÆR ØKONOMI

SP Moulding tilbyder samarbejde om bio-og genbrugsmaterialer med firmaer, designere, institutioner og kommuner med afsæt i regeringens resourcestrategi om øget genbrug af plastaffald.



Tak for opmærksomheden

FLEMMING CHRISTIANSEN
FC@SP-MOULDING.DK
MOBIL : 20167431